



2010 Annual Report

Introduction

An information-rich state helps make Indiana a more attractive place to live. Put that information on a map and you have a tool to build communities, identify areas in need, improve the environment, track trends, attract business, protect homes and citizens, and more. This technology is known as Geographic Information Systems (GIS).

The Indiana Geographic Information Council (IGIC) continues to provide statewide coordination of GIS through:

- Dissemination of data and data products
- Education and outreach
- Adoption of standards
- Building partnerships
- The IndianaMap

The IndianaMap

The IndianaMap, IGIC's signature initiative, is an investment in Indiana. It is a diverse and flexible system that provides information about Indiana. It is a utility providing a modern information system to a large community of users. The IndianaMap is a trustworthy source of geospatial data and services that provides users with both documented and authoritative information.



The IndianaMap organizes geospatial data in a shared location, promotes collaboration, facilitates economic development, speeds up disaster response and recovery, connects decision makers with the data they need, archives Indiana data for the long term, and supports daily operations for businesses and government agencies.

In 2010 IGIC continued support of the IndianaMap Data Sharing Initiative started in 2009. The Indiana Department of Homeland Security provided funding for local government participation in this initiative along with thirteen partner organizations. Currently eighty-five Indiana Counties have agreed to share their authoritative parcel, address point, road centerline, and boundary data with the State of Indiana and the IndianaMap. Initial program funding for participating counties will continue through 2011, and Indiana's Geographic Information Officer (GIO) has identified funding for an additional three years after that.

Maintaining the IndianaMap: IGIC staff, workgroups and committees wrote specifications and explored funding opportunities for acquiring new statewide orthophotography and elevation datasets, and updating Indiana's hydrography and height reference system. These efforts directly contributed to Indiana's ability to begin the RFP process to contract for new statewide Orthophotography, LiDAR, and Hydrography data in 2011 – 2013.

IGIC 2010 Board of Directors

The Indiana Geographic Information Council is a nonprofit organization whose mission is to lead the effective application of geographic information in Indiana. Our membership includes individuals from all levels of government, private industry, educational institutions and other nonprofit groups. Through our membership and elected board of directors, we strive to make a real difference in Indiana GIS - both for those who use it and those who benefit from it. Our 2010 Board of Director members by sector are:

State Government

Geoff Schomacker

Office of the Lieutenant Governor
Indiana Office of Community and Rural Affairs
One North Capitol Avenue Suite 600
Indianapolis, IN
gschomacker@ocra.in.gov

Joel Bump

Indiana Department of Transportation
100 North Senate Ave IGCN Room N801
P.O. Box 6015
Indianapolis, IN 46204
jbump@indot.in.gov

County Government

Sarah Nichols Rossier

Association of Indiana Counties
Deputy Legislative Director
10 W. Market Street, Suite 1575
Indianapolis, IN 46204-2986
srossier@indianacounties.org
www.indianacounties.org

Steven Hook - IGIC Past President

Noble County
2090 N. State Road 9, Suite B
Albion, IN 46701
shook@nobleco.org

Charles (Val) Swift

Hamilton County
Surveyor's Office
One Hamilton County Square, Suite 188
Noblesville, IN 46060
cds@co.hamilton.in.us

Municipal Government

Deb Kuehn (Martin)

City of South Bend
227 W. Jefferson, Room 1316
South Bend, IN 46601
dmartin@southbend.in.gov

Anne E. Trobaugh

Indiana Association of Cities and Towns
200 S. Meridian, Suite 340
Indianapolis, IN 46225
atrobaugh@citiesandtowns.org
www.citiesandtowns.org

Federal Government

David Nail

U.S. Geological Survey
5957 Lakeside Boulevard
Indianapolis, IN 46278
dnail@usgs.gov

Stephen Ball

Natural Resources Conservation Service
6013 Lakeside Boulevard
Indianapolis, IN 46278
stephen.ball@in.usda.gov

Education

Anna Radue

Indiana University
2711 E. Tenth Street
Bloomington, IN 47408
aradue@iu.edu

Indiana Spatial Data Portal - <http://gis.iu.edu>

Kevin Mickey - IGIC Secretary

The Polis Center at IUPUI
1200 Waterway Blvd
Indianapolis, IN 46202
kmickey@iupui.edu

Regional GIS Consortia

Cele Morris

Northwest Indiana GIS Forum
Northwest Indiana Center for Data Analysis
3400 Broadway
Gary, IN 46408
cmorris@iun.edu

Jim Stout

IMAGIS
200 E. Washington St, CCB2122
Indianapolis, IN 46204
jstout@indygov.org

Regional Planning Commissions

Lisa R. Gehlhausen

Indiana 15 Regional Planning Commission
221 E. First Street
Ferdinand, IN 47532
lisa@ind15rpc.org

GIS Service Providers

Chris Walls - IGIC Secretary

39 DEGREES NORTH
501 N. Morton St
Bloomington, IN 47404
chris@39dn.com

Andrew Harrison

The Schneider Corporation
8901 Otis Avenue
Indianapolis, IN 46216
aharrison@schneidercorp.com

Nonprofit

Fiona Solkowski

The Nature Conservancy
1505 N Delaware St Suite 200
Indianapolis, IN 46202
fsolkowski@tnc.org

Carol Rogers

Indiana Business Research Center
777 Indiana Avenue, Suite 210
Indianapolis, IN 46204
rogersc@iupui.edu

Utilities

Charline Avey - IGIC Treasurer

Veolia Water
1220 Waterway Boulevard
Indianapolis, IN 46202
charline.avey@veoliawaterna.com

Leane Welsh

City of Westfield
2706 E. 171st St
Westfield, IN 46074
lwelsh@westfield.in.gov

Critical Infrastructure

Steve Adams

Duke Energy
139 E. 4th Street
Cincinnati, OH 45201
steve.adams@duke-energy.com

Christina McCullough

Indiana National Guard
2002 S. Holt Road, BLDG 1, RM 150
Indianapolis, IN 46241
christina.mccullough@us.army.mil

Surveyors

John Milburn – County Surveyor's Association

Hancock County Surveyor's Office
111 S. American Legion Place
Room 171
Greenfield, IN 46140-2371
jmilburn@hancockcoingov.org

Ryan Swingley - ISPLS

USI Consultants, Inc.
8415 E. 56th Street
Indianapolis, IN 46216
rswingley@usiconsultants.com

Members At Large

Rick Hill

Indiana Geological Survey
611 Walnut Grove
Bloomington, IN 47405-2208
hill2@indiana.edu

Brooke Gajownik

Hamilton County Sheriff's Department
18100 Cumberland Rd
Noblesville, IN 46060
bmg@co.hamilton.in.us

Mike Martin

Indiana Department of Natural Resources
402 W Washington Street, Room 271
Indianapolis, IN 46204
mmartin@dnr.in.gov

Shaun Scholer - IGIC Vice President

City of Richmond/Wayne County GIS Interlocal
301 E. Main Street
Richmond, IN 47374
sscholer@co.wayne.in.us

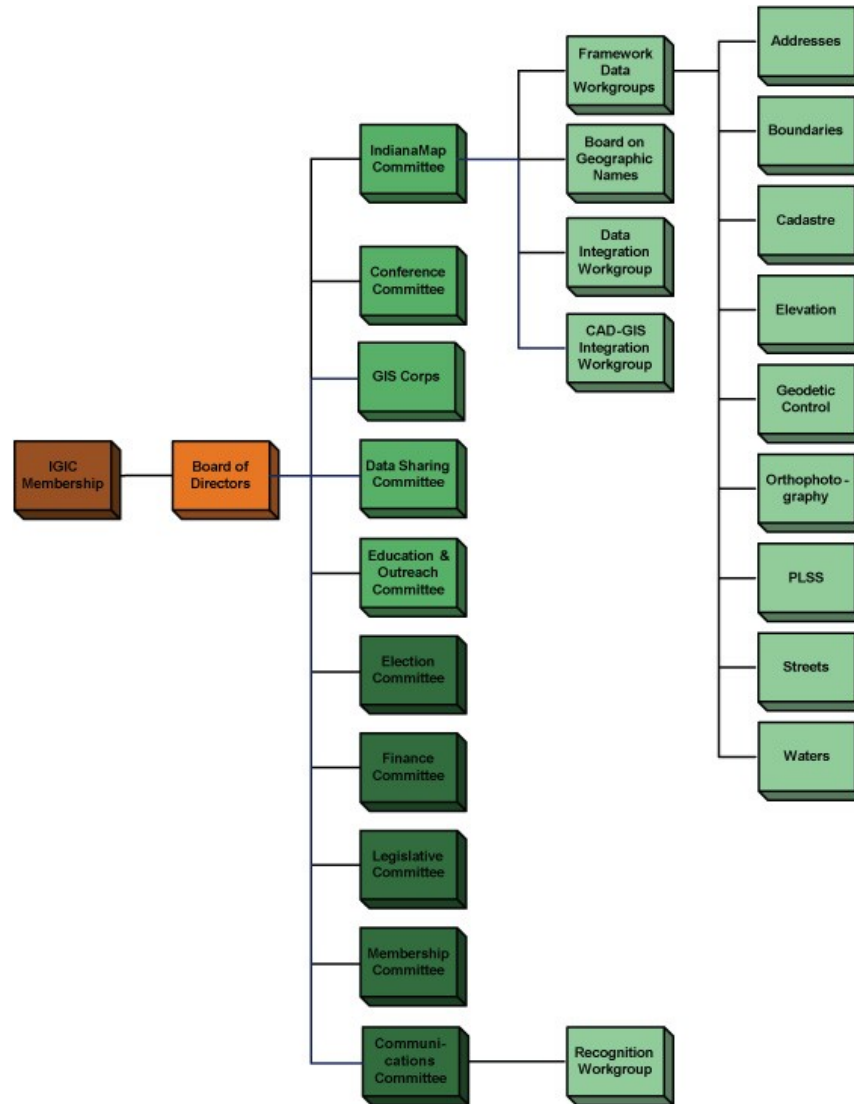
IGIC Executive Director

Phil Worrall

Indiana Geographic Information Council
777 Indiana Avenue, Suite 210
Indianapolis, IN 46202
pworrall@igic.org

Committee and Workgroup Activities

IGIC's committees and workgroups are essential to achieving its goals. In 2010 these groups provided over 1,400 volunteer hours on projects ranging from emergency response efforts to hydrography stewardship to legislative initiatives. IGIC's organizational chart is included below followed by committees and workgroup 2010 reports.



Boundaries-Cadastre-PLSS Workgroup

- Completed the “Cadastral, Boundaries, PLSS Workgroup Report, February 11, 2010”. summarizing the 2009 Workgroup accomplishments and the work proposed for 2010.
- Lorraine Wright gave a presentation, “IGIC – Cadastral, Boundaries, PLSS Workgroup Update” at the IGIC 2010 Annual GIS conference.
- The Workgroup developed a Data Integration Plan dated April 1, 2010 and provided it to the IGIC Director and the Indiana Geographic Information Officer.
- The Workgroup utilized information from the Newberry Library regarding Indiana county boundaries. It provides a great resource for historical information on Indiana county boundaries.

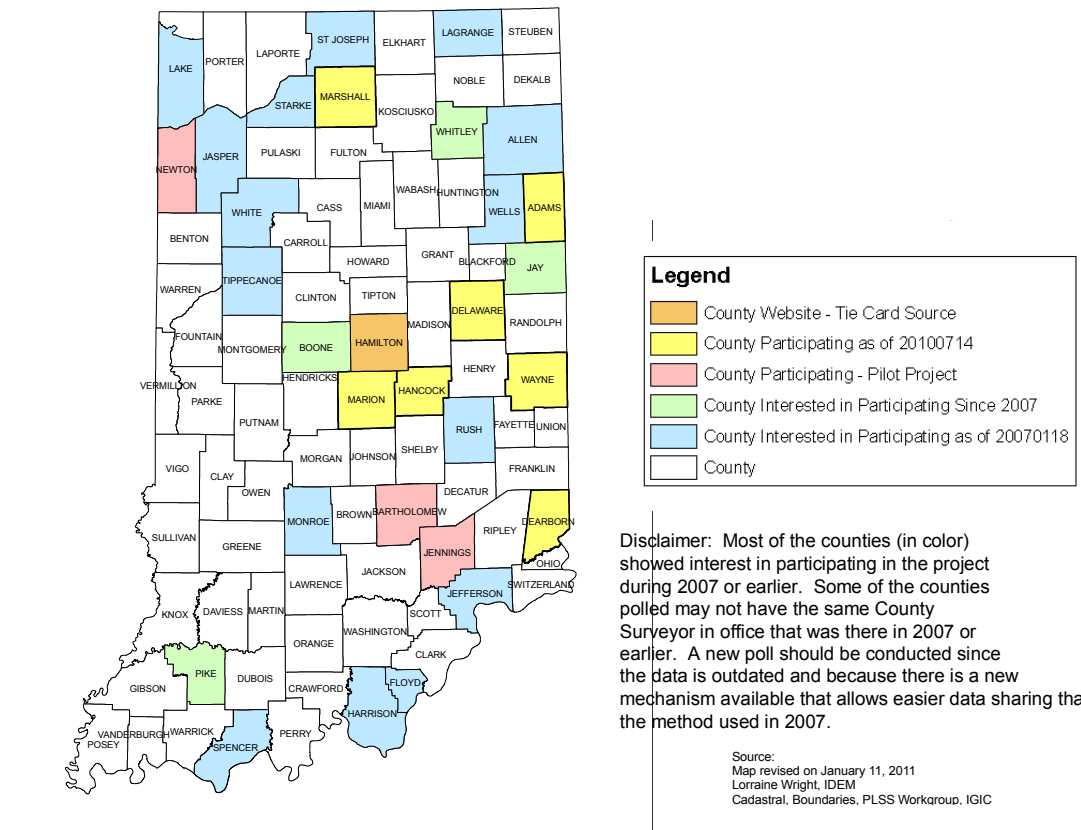
- Collected and summarized information about all known state-wide GIS county boundary layers
- The Workgroup proposed a Strawman for a State-wide Point and Line County Boundary in April 2010.
- IGIC, on behalf of the workgroup, sent a letter to the County Surveyors in May 2010 inviting counties to participate in the IndianaMap - Surveyor Tie Card Project. Adams, Dearborn, Hancock, Wayne, and Marshall Counties responded that they were interested in participating.
- Lorraine gave a presentation, “A State-wide View of Section Corner Data”, about the Tie Card Project at the State of Indiana GIS Day, November 9, 2010. The power point presentation is available on the Workgroup website.
- The Workgroup set the direction of the work that is being done on the different projects and Lorraine is working on the projects as time allows.

Workgroup Projects:

The Grid Point layer was updated to incorporate points that were missing in Marion and Wayne Counties. Lorraine worked on a way to make it easier for the county to update the Tie Card layer by adding the County’s naming convention to the grid point layer for Wayne and Marion County. It is more time consuming up front but should be more efficient for updating their layers on the IndianaMap.

Tie Card Project – Marion and Wayne County Tie Card layers were completed September 30 and October 13, 2010 respectively and posted on the IndianaMap on October 26, 2010.

Below is a map showing the counties that are interested and actively participating in the project.



New County Boundary Polygon Layer for IndianaMap

IGIC and IGS met on June 3, 2010, to discuss logistics of the various layers the workgroup is working on for the IndianaMap. IGS volunteered to revise the IGS County Boundary Polygon Layer to include the Court Ordered, geodetically described, boundary between Indiana and Kentucky (Indiana's southern boundary).

New County Boundary Point and Line Layers for IndianaMap

Lorraine Wright used the Legal description of Marion County to identify the section corners and section lines that make up the County Boundary point and line layers. The County legal descriptions need to be compiled from the legal references before we can identify the corners and lines that define the boundaries. Robert Mueller, State Land Office, and Lorraine are working together on the project.

Government Land Office (GLO) Records Project

The Workgroup searched for funding that would support taking the Original Indiana Surveying Notes and Plats from the Government Land Office (GLO) (county, state, and federal) and link them to the IGS Township/Range layer.

CAD-GIS Integration Workgroup

The CAD-GIS Integration Workgroup completed their initial work on the CAD-to-GIS data model and workflow and presented the results in a webinar on December 7th. The Workgroup plans to make another presentation in 2011 and make a recording of it available.

Conference Committee

The conference committee met frequently during the year to plan and implement the annual GIS Conference. The 2010 GIS Conference held at Bloomington, Indiana's Convention Center had 309 attendees. The Conference Committee reduced 2010 conference costs by selecting a venue outside the Indianapolis metro area and utilizing Indiana University's training and meeting facilities.

Education & Outreach Committee

2010 was a year filled with activities facilitated by the Education Committee. We organized and sponsored a total of 4 seminars held at the Indiana State Library. We also conducted 2 webinars. These events were attended by a total of 104 participants. In addition to these events we conducted our third Local Government GIS forum which was attended by representatives from 65 cities, towns, and counties across Indiana. This event continues to achieve its primary goal of providing a venue where representatives of local government can come together to discuss current and pertinent issues of interest to the GIS community in our state. It remains a vital event for helping IGIC define its strategic objectives each year.

IGIC established a relationship with the Boy Scouts of America and the Indiana State Fair. During the seventeen day run of the Fair, IGIC had a booth in the Scout camp area of the Fair that exposed hundreds of individuals to the resources offered by IGIC, its participants, and partners throughout the state. The presence of IGIC in the Scout area not only provided an excellent outreach venue for IGIC, but it also served to bring Fair patrons into the area so that they could learn about the BSA program. IGIC also collaborated with Esri and the Indiana Geological Survey to create a kiosk located in the Normandy Barn which introduced the capabilities of the IndianaMap. IGIC is currently in discussions with the Boy Scouts and the State Fair to continue this mutually beneficial partnership at the 2011 Fair.

In 2011 we anticipate building on our 2010 success by offering an average of one education event each month. For 2011 we are emphasizing the use of webcasts and continuing to pursue the use of podcasts. In addition, we anticipate recording selected webinars so that they can be made

available on demand via the IGIC website. Finally, we will continue the tradition of offering our Local Government GIS Forum with the 5th Annual Forum already scheduled to occur on September 16, 2011.

Teachers Workshop on GIS

Layne Young worked with GENI to pursue K-12 classroom GIS education. We are excited to see the new connections.

Public Events

IGIC presented nine seminars and workshops focusing largely in the IndianaMap Data Sharing Initiative. Workshops around the state, online webinars, and traditional seminars reached almost 200 people. The Local Government GIS Forum continued for its third year, and provided a unique opportunity for over 70 GIS professionals from across Indiana to speak candidly with each other about common issues and solutions.

Elections Committee

The 2010 Elections Committee Members included Lisa Gehlhausen, Cele Morris, Bill Holder, and Steven Hook. The following changes were made to appointed IGIC Board seats for 2011:

- Surveyor's Association – David Gaston to name replacement for John Milburn
- Indiana Association of Cities and Towns – Danielle Coulter replaces Sarah Rossier

The following people were elected to the IGIC Board of Directors for 2011:

- Rural County Sector – Chad Hoover
- Rural Municipal Sector – Rob Mendel
- Not-for-Profit Sector – Carol Rogers
- Commercial GIS Service Provider Sector – John Hannel
- Regional GIS Consortia Sector – Greg White
- Regional Planning Commission Sector – Trent Pell

The following IGIC Board Members are nominated as Officers in 2011:

- Past President –Shaun Scholer, City of Richmond/Wayne County GIS Interlocal
- President – Anna Radue, Indiana University
- Vice President – Charline Avey, Veolia Water
Greg White, Lake County Surveyor's Office
- Secretary -- Leane Kmetz, City of Westfield
Rick Hill, Indiana Geological Survey
- Treasurer – Chris Walls, 39 Degrees North

Elevation Workgroup

Members of the Elevation Workgroup worked with the GIO to support the specifications and funding for the new Statewide LiDAR collection project. David Nail is moderating a hands-on workshop at the 2011 GIS Conference on Using LiDAR Point Cloud data. This presentation will provide a template for conducting LiDAR Roadshows around Indiana as the new LiDAR data is delivered in 2011.

IGIC / ISPLS Geodetic Control Workgroup

This workgroup pursued Height Modernization initiatives and ways to educate about the importance of Height Modernization for Indiana. Dedicated National-level funding for Height Modernization has become non-existent, and the current method of using ear-mark budget line items is under general attack by the Federal Administration. The potential benefits of Height Modernization to Indiana's Local Governments, our State Government, Indiana agriculture, our construction industries, and our Citizens are huge, but very poorly understood.

Indiana GIS Response Corp Committee

The 42 member GIS Response Corps worked on an Emergency Response binder. In late 2010 the Corps provided a submission for FEMA's Challenge, Preparing our Communities Before a Disaster Strikes. For more information about the Challenge see: <http://challenge.gov/challenges/87/submissions/900-gis-volunteers-ready-to-support-emergencies-in-indiana>

Legislative Committee

The Legislative Committee continued to review options to acquire sustainable funds for GIS in Indiana and wrote draft legislation. The Committee also updated the IndianaMap Guide for the State Legislature. IGIC Board Members will use this booklet as a resource when talking with their own local elected officials and state representatives to inform them about GIS and gain support for IGIC's proposed legislation. IGIC needs to identify potential House and Senate sponsors for the proposed legislation.

Membership Committee

The Membership Committee met five times during 2010 to discuss the committee's objectives of increasing IGIC memberships and fundraising. Committee members discussed new corporate membership categories and approved the 2011 Membership and Sponsor Plan Draft V5. The committee created a salary survey (265 responses) and provided a summary web report available only to IGIC members. The committee advised regarding regional Geo-Dinner meetings at Muncie and South Bend, and a golf outing at Saddleback Golf Course. At the direction of the IGIC Board, the membership committee reviewed IGIC web page content and made recommendations regarding which pages are restricted to IGIC members-only and which are viewable by the general public. The committee selected 203 web pages of 380 to restrict to member only viewing; IGIC staff implemented these changes the end of 2010.

Orthophotography Workgroup

A subgroup of the Orthophotography Workgroup met several times early in 2010 to develop a Request for Proposal (RFP) for an on-going, statewide orthophotography program. The State Procurement Division (through the State GIO) released the 44 page RFP (RFP-10-89) on May 14. The Workgroup reviewed vendor proposals and made recommendations to the GIO. The State selected Woolpert as the project vendor with flights beginning in March, 2011. The vendor will fly the center of Indiana in 2011, the eastern side in 2012, and the western side in 2013.

Contract specifications:

- 12-inch RGB orthophotos (GeoTIFF), with 6-inch and 3-inch buy-ups.
- CIR near-infrared orthos
- LiDAR (1.5-meter post spacing) for all of Indiana (except the few counties with new LiDAR)
- 5-foot pixel DEM in ERDAS Imagine IMG format
- Marketing and Promotion of the Ortho Program

Recognition Committee

In an ongoing effort to recognize creative and practical applications of GIS in Indiana, IGIC presents 6 awards annually for excellence in GIS. These projects exemplify how GIS is used to improve services for Indiana's citizens. They also help IGIC show elected officials, agency heads and community leaders the importance of investing in GIS.

The Recognition Committee received 22 nominations for IGIC's Excellence in GIS Awards. The Committee selected one award in each of six categories. The winners selected were:

Large Community: [City of Bloomington: myTown, Indiana](#)

Small Community: [Town of Brownsburg: All Together Now](#)

County Government: [Wayne County: Shared History](#)

State and Federal Government: [Indiana Department of Transportation: How Hoosiers Help](#)

Education & Nonprofit: [Indiana University-UIITS: More Maps More Ways](#)

Business or Commercial: [Hamilton Southeastern Utilities: Fewer Steps to Dance](#)

Streets and Addresses Workgroup

This Workgroup worked to define a data model that will accept all address and street formats in a single model for the IndianaMap. The group reviewed and compared FGDC and NENA draft standards and contacted IUPPS to determine what format might be useful to them. Charline Avey reviewed the statewide, street centerlines dataset from the Data Sharing Initiative to determine which changes are needed for USPS certification.

Waters Workgroup

This Workgroup participated in the State's vendor selection process for the Local Resolution NHD project. The State awarded AECOM the rights to negotiate a contract to upgrade the NHD to local-resolution, as funds become available. USGS funded supported the start of the Upper Eel Sub-basin pilot project area. IGIC staff has delivered to AECOM all datasets needed to begin the pilot project. The eight sub-basins in the Great Lakes Initiative Region, Phase 1, are delayed by funding issues.

Dave Nail coordinated the efforts of Workgroup members to verify and correct errors in the existing NHD feature names obtained from the GNIS (Geographic Names Information System). The USGS provided a 3-day training session for Workgroup members, AECOM, and its subcontractors regarding the conflation process and QA/QC. The Workgroup corrected 21 of the 38 Indiana sub-basins.

Workgroup members made presentations at the Indiana Association for Floodplain and Stormwater Management's annual conference, the Indiana state agency GIS User Group Meeting, and IGIC's annual conference.

Websites

In 2010 IGIC modified our primary web site www.igic.org to provide more members-only content. This web site received almost four million hits and over 50 thousand unique visitors in 2010. Our other primary domain for the IndianaMap www.indianamap.org serves as a front-end to the IndianaMap Viewer. This web site received almost three million hits and over 30 thousand unique visitors in 2010.

Other Activities

In addition IGIC coordinated the following events in 2010:

- Geo Dinner April 13, 2010 Muncie IN; November 10, 2010 South Bend, IN
- IGIC Information Tent, Boy Scout Orienteering Event, and IndianaMap Kiosk at the Indiana State Fair August 5th through 21st.
- IGIC Golf Outing, September 21, 2010
- The Indiana GIS Newsletter to more than 1,200 recipients each month
- Partnered with ISPLS to host a two-day Height Modernization Conference/Workshop for GIS and Professional Surveyors
- GISP Certification Credits to seminar and workshop participants
- Brochures and other materials for local government officials
- Responded to dozens of igic.org and indianamap.org help desk requests

IGIC Grants

National Hydrography Dataset (NHD) Geographic Names Updates (\$25,000)

This project updates the geographic name information in the existing high-resolution National Hydrography Dataset (NHD). The names in the existing NHD hydrography layer do not accurately reflect the Geographic Names Information System (GNIS), the authoritative federal source for geographic names. This project is an essential first step toward building local-resolution NHD data for Indiana. Although IGIC's Waters Workgroup volunteers planned to complete this project by the summer of 2010, the project will extend to 2011 to make more needed corrections than originally estimated.

2009 IndianaMap Data Sharing Initiative - FGDC CAP #7 Grant (\$75,000)

Awarded to IGIC by the Federal Geographic Data Committee (FGDC), this project supports IGIC's ongoing Data Sharing Initiative program. This grant allowed IGIC and its partners to further develop the processes and tools critical to the growth of the IndianaMap as a portal for sharing local data. Activities included the development of data harvesting tools, QA/QC data testing and reporting, data replication and publishing to the IndianaMap, next generation data model design, and the documentation and sharing of best-practices. IGIC and its partners successfully completed this project on December 31, 2010. The IndianaMap Data Sharing Initiative continues, and IGIC will continue unfunded work to support this effort while new funding sources are found.

Essential Facilities Data for the IndianaMap (\$62,500)

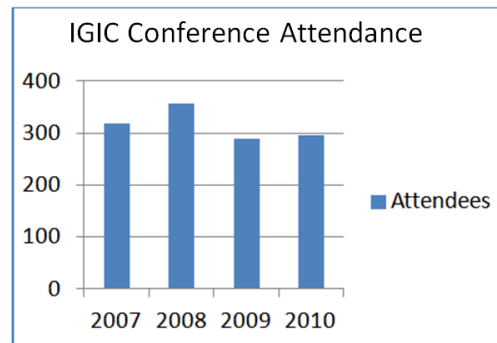
The US Geological Survey funded this project to add HAZUS essential facility structures datasets to the IndianaMap and make available to The National Map. The additions include fire stations, police stations, emergency operations centers, hospitals, medical care facilities, and schools. FEMA's HAZUS Multi-Hazard risk assessment tool that is used to model and analyze potential losses from floods, hurricane winds and earthquakes includes these essential facility datasets. This project developed and conducted a four county pilot project for local non-GIS First Responders to maintain this information through a web-based Google Maps interface. IGIC and its partners successfully completed this project on December 31, 2010. IGIC continues to demonstrate and promote this pilot project seeking new funding sources for statewide deployment.

2010 Indiana NHD Geo-Synchronization Service – FGDC CAP #2 Grant (\$50,000)

IGIC in partnership with Image Matters LLC began creating the Indiana Geo-Synchronization Suite (IGSS), a collection of web services to easily communicate (transmit, review, and reject/approve) updates to Indiana's High-Resolution and new Local-Resolution National Hydrography Data (NHD). IGSS will enable updating and publishing functionality for NHD data within the current operating environment of Indiana's Geographic Information Office (NHD steward), the Indiana Office of Technology, State and Local NHD data users, maintainers, and the USGS. During 2010 Image Matters LLC completed the project design, started the development phase, and began the first round of application testing. Image Matters will complete the project in 2011.

Financial Summary

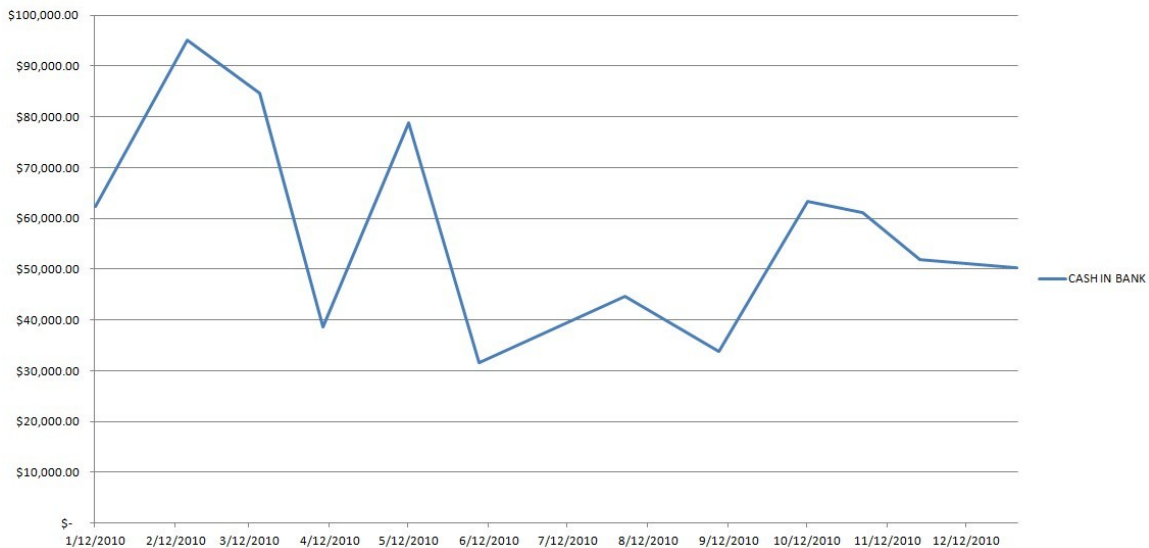
IGIC's three primary sources of revenue which have remained relatively constant over the past five years are IGIC memberships, annual GIS Conference, and grants. IGIC's paid membership numbers remained stable in 2010 at 322. The 2010 GIS Conference held at Bloomington, Indiana's Convention Center had 309 attendees. The Conference Committee reduced 2010 conference costs by selecting a venue outside the Indianapolis metro area and utilizing Indiana University's training and meeting facilities.



The majority of IGIC's operating income comes from grants (soft money). This soft money funding is a challenge to effectively plan ongoing and future operations. The 2010 Congress cut the annual budgets of Federal funding sources like the US Geological Survey, DHS/FEMA, EPA and the Federal Geographic Data Committee (FGDC), resulting in future smaller and fewer competitive and cooperative grants.

IGIC continues to seek new project opportunities to replace reduced grant funding. IGIC will work closely with the State's Geographic Information Office and other state agencies in support of new statewide GIS projects such as Orthophotography and Elevation (LiDAR) data acquisition, local-resolution National Hydrography Data (NHD) development, and statewide Broadband Mapping. IGIC staff and the Executive Committee continually strive to improve internal office operations and identify cost cutting measures.

CASH IN BANK



- END OF DOCUMENT -