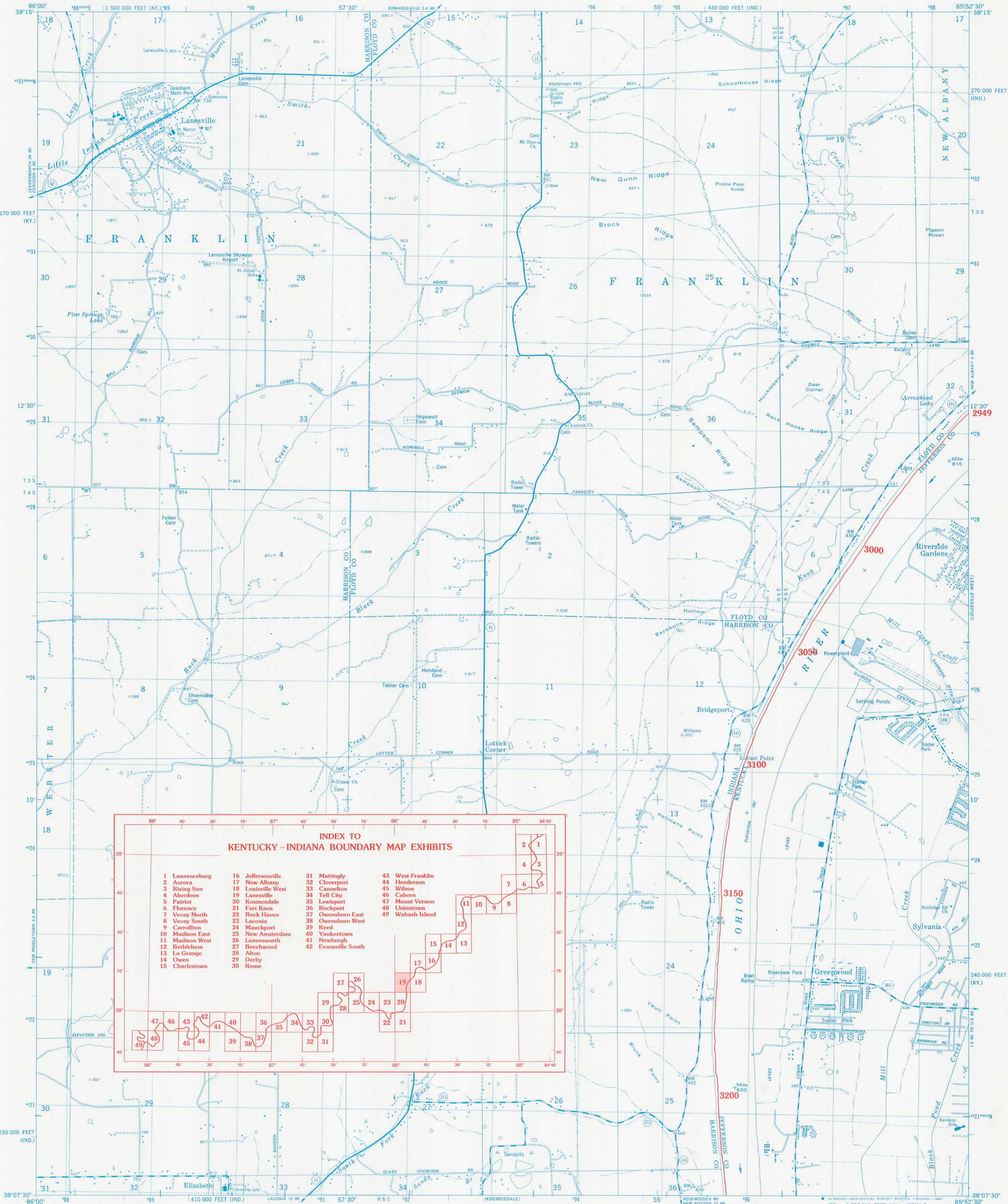


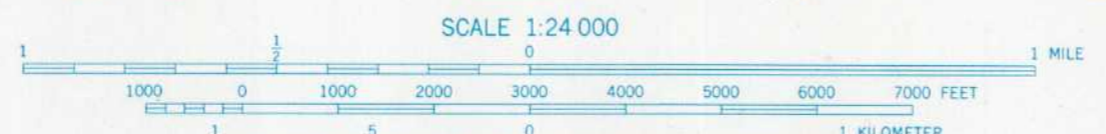
# KENTUCKY-INDIANA BOUNDARY



**INDEX TO  
KENTUCKY-INDIANA BOUNDARY MAP EXHIBITS**

1 Lawrenceburg	16 Jeffersonville	31 Mattingly	43 West Franklin
2 Aurora	17 New Albany	32 Cloverport	44 Henderson
3 Rising Sun	18 Louisville West	33 Cannerton	45 Wilson
4 Aberdeen	19 Lanesville	34 Tell City	46 Caborn
5 Patriot	20 Kosmosdale	35 Lewisport	47 Mount Vernon
6 Florence	21 Fort Knox	36 Rockport	48 Uniontown
7 Vevay North	22 Rock Haven	37 Owensboro East	49 Wabash Island
8 Vevay South	23 Laconia	38 Owensboro West	
9 Carrollton	24 Mauckport	39 Reed	
10 Madison East	25 New Amsterdam	40 Yanketown	
11 Madison West	26 Leavenworth	41 Newburgh	
12 Bethlehem	27 Beechwood	42 Evansville South	
13 La Grange	28 Alton		
14 Owen	29 Derby		
15 Charlestown	30 Rome		

Mapped by the Army Map Service and the Geological Survey  
Edited and published by the Geological Survey  
in cooperation with Kentucky Geological Survey  
Control by USGS, NOS/NOAA, and USCE  
Topography by photogrammetric methods from aerial photographs  
taken 1949. Field checked 1950. Revised from aerial photographs  
taken 1978. Field checked 1979. Map edited 1982  
Polyconic projection. 1:0,000-foot grid ticks based on Indiana  
coordinate system, east zone, and Kentucky coordinate  
system, north zone  
1000-meter Universal Transverse Mercator grid, zone 16  
1927 North American Datum



**1927 NORTH AMERICAN DATUM**  
KENTUCKY-INDIANA BOUNDARY COORDINATES DEFINING  
THE BOUNDARY ON THIS MAP ARE: NUMBERS 2949 THROUGH 3253  
THE COMPLETE LISTINGS OF THE KENTUCKY-INDIANA BOUNDARY  
COORDINATES ARE CONTAINED IN EXHIBIT NO. 50  
COORDINATE NUMBERS SHOWN WITHIN THIS MAP INDICATE  
APPROXIMATE LOCATIONS AND ARE INTENDED AS REFERENCE ONLY



**ROAD CLASSIFICATION**  
Primary highway, hard surface  
Secondary highway, hard surface  
Light-duty road, hard or improved surface  
Unimproved road  
Interstate Route  
U. S. Route  
State Route

LANESVILLE, IND.-KY.  
NW/4 KOSMOSDALE 15' QUADRANGLE  
N3807.5-W8552.5/7.5

1982

**KENTUCKY v. INDIANA No. 81, Orig.  
JOINT EXHIBIT NO. 19**