



**IGIC ArcGIS Pro Support Group**  
**Wednesday, January 19, 2022**  
**11am – 12pm**

## **Agenda**

- Introductions
- Demo (Create Map Series)
- Discussion
- Schedule

## **Attendees**

- Marianne Cardwell
- Steve Hook
- Bernadette DeLeon
- Derek Elliott
- Derek Fuller
- Jared Eichmiller
- Jill Flachskam
- Jill Sprague
- Lorraine Wright
- Shaikh Abdullah Al Rifat
- Joanna Wood
- Trohn Enright-Randolph
- Diane (Osborn?)
- Andrew Swenson

## **Creating Map Series Demo**

1. Open Map\_Series\_Demo project, which contains 2 maps and a layout.
2. Click on the Map Series image in the Contents Pane.
3. Right-click on the Layout and select Properties.
4. In the Map Series tab, do the following:
  - a. Set to Spatial
  - b. Map Frame: Inset Map Frame
  - c. Layer: Current County

- d. Name & Sort fields: NAME
5. This adds the county names to the list of map series.
6. Fix layer settings:
  - a. Statewide map:
    - i. Right-click on Current County and select Properties
    - ii. Go to the Page Query tab and make sure the drop-down is set to NAME and that the “Match” radio button is selected.
  - b. Inset map:
    - i. Right-click on County Mask and select Properties
    - ii. Go to the Page Query tab and make sure the drop-down is set to NAME and that the “Don’t Match” radio button is selected.
7. Fix layout title:
  - a. Right-click on title and select Properties
  - b. In the Text, add `<dyn type="page" property="name"/>` to the title to add the county name.
8. Export all maps:
  - a. Go to Share – Export Layout.
  - b. Select PDF.
  - c. Go to Map Series tab to specify whether to print all 92 pages, the current pages, or specific page numbers.

#### Help Sources:

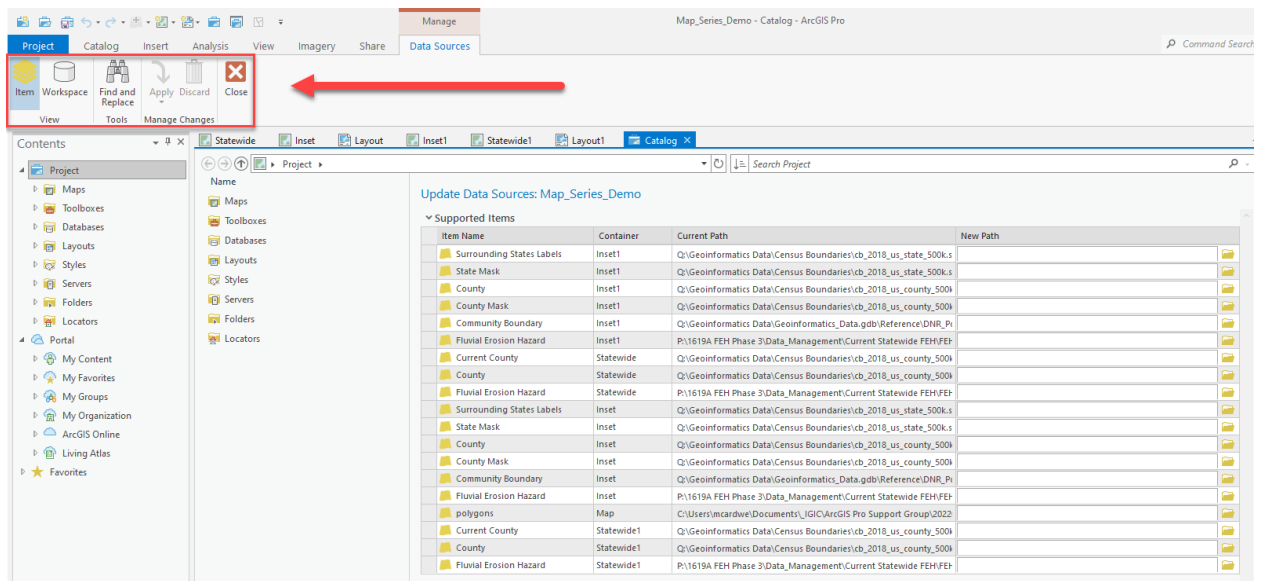
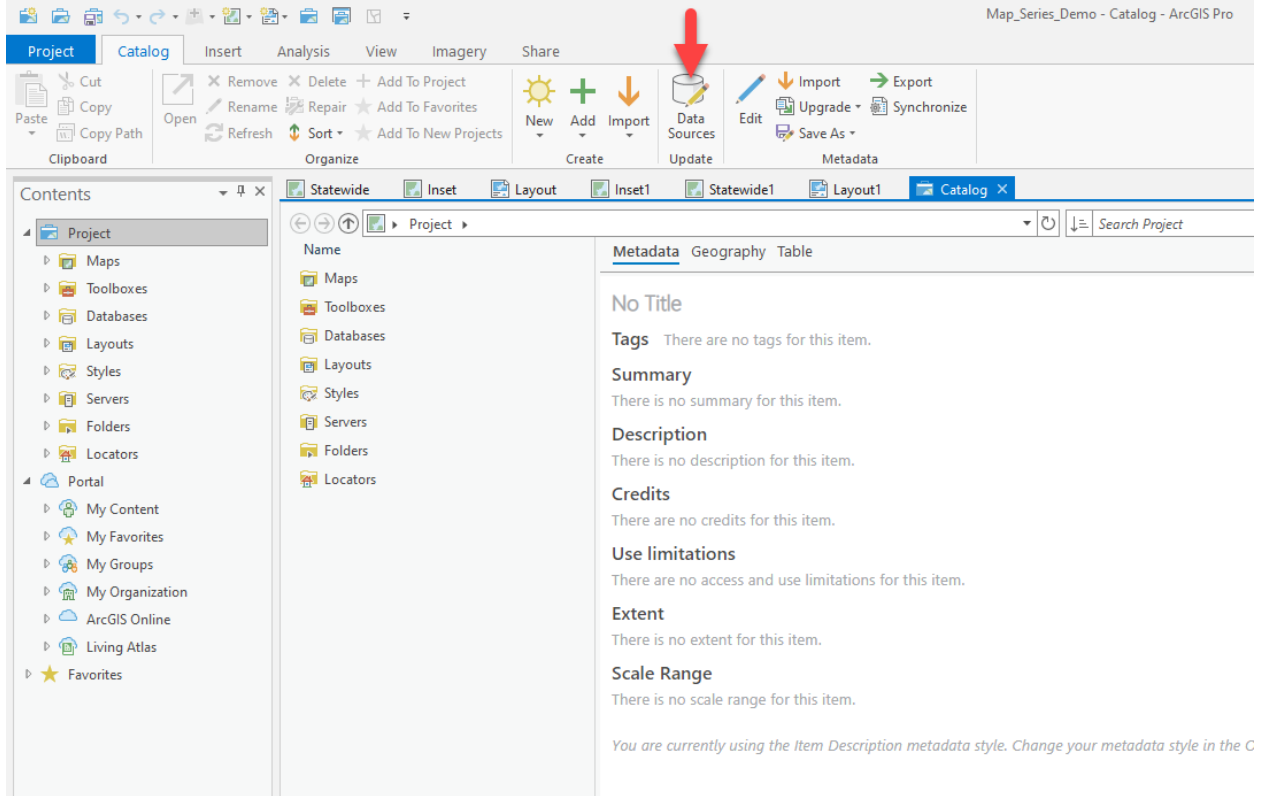
- <https://pro.arcgis.com/en/pro-app/latest/help/layouts/create-a-map-series.htm>
- <https://pro.arcgis.com/en/pro-app/latest/help/layouts/use-dynamic-text-with-map-series.htm>
- <https://pro.arcgis.com/en/pro-app/latest/help/layouts/export-options.htm>

#### Tips & Tricks

Fixing broken links using Python:

```
aprx = arcpy.mp.ArcGISProject("CURRENT")
aprx.updateConnectionProperties(r"P:\Geoinformatics Data",r"Q:\Geoinformatics Data")
```

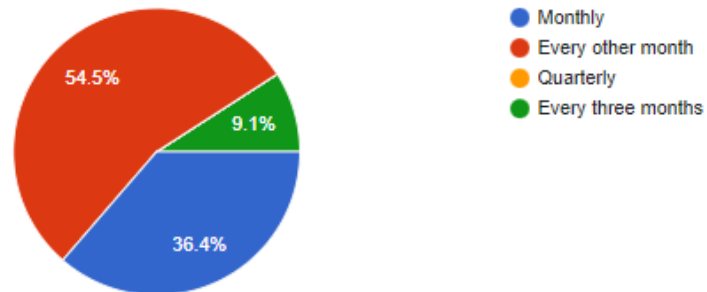
Using the interface:



## Survey Results:

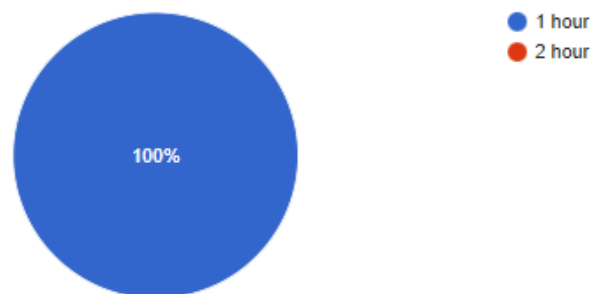
### Frequency

11 responses



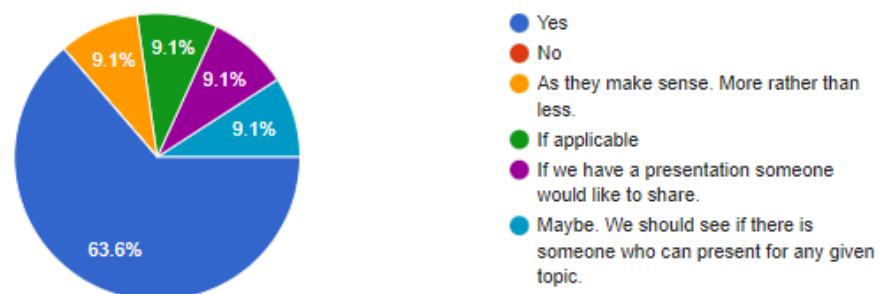
### Meeting Length

11 responses



### Presentations every time?

11 responses



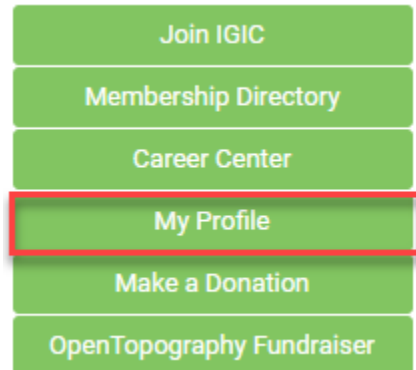
Communication In-between meetings

9. Leverage ArcGIS Pro forum

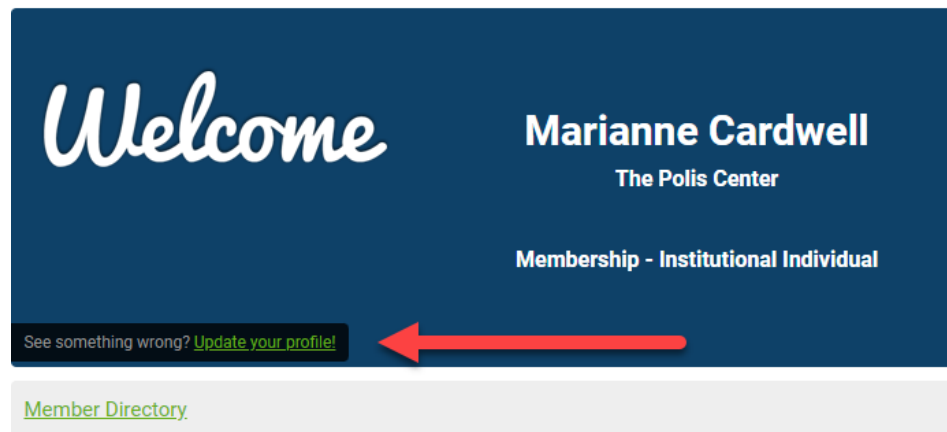
([https://igic.memberclicks.net/index.php?option=com\\_ccboard&view=topiclist&forum=23&Itemid=](https://igic.memberclicks.net/index.php?option=com_ccboard&view=topiclist&forum=23&Itemid=))

10. To change your subscription preferences:

- a. Go to [www.igic.org](http://www.igic.org)
- b. Login
- c. Go to “My Profile” if you’re not already there.

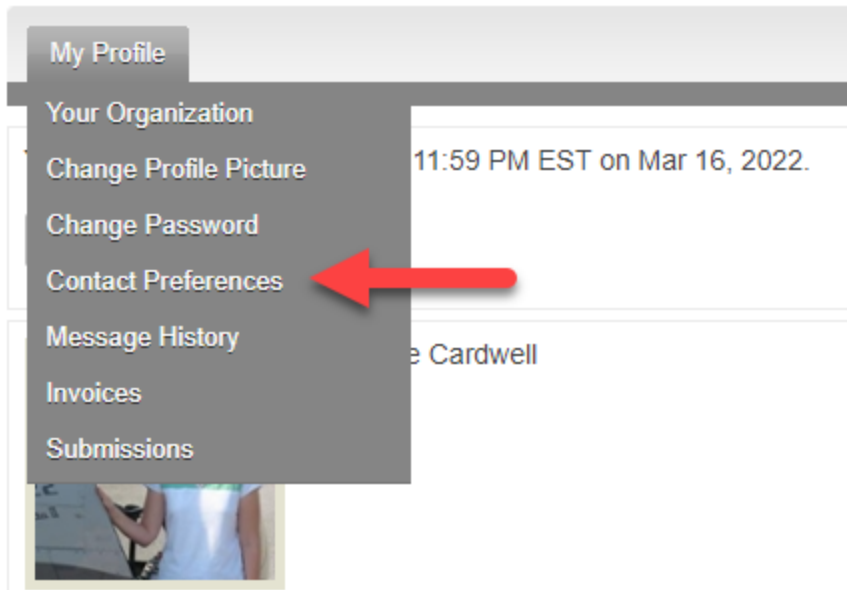


- i.
- d. Click on “Update your profile!”



**Welcome to the Members Only Area!**

- i.
- e. Hover over the “My Profile” tab and select “Contact Preferences”.



- i.
- f. Find the relevant forum subscription and change the notification.

Forum Subscriptions

Name	Description	Notification
Cadastre-Boundaries - PLSS		None
Data Archives & Preservation		None
ArcGIS Pro		New Topics and Replies
ArcGIS Server		New Topics and Replies
Board on Geographic Names		None

5 Per Page of 23 Page 1 of 5 First Previous Next Last

i.

Next meeting Wednesday March 16 from 11:30 to 12:30 ET.

- 1. Andrew will present